



www.billbeall.com

**1,750 SF - FOR LEASE**

Kansas Station

3037 S. Kansas Expressway, Springfield, MO



## HIGHLIGHTS

- 1,750 SF
- Could be combined with 3039 for a total of 3,500 SF
- Sizeable Conference Room
- Front Door Parking
- Zoned: General Retail
- CAM: +/- \$3.70/ SF = \$540.00 / Month
- Lease Rate: \$10.00 / SF = \$1,458.00 / Month
- Estimated Monthly Payment = \$1,998.00



FOR ADDITIONAL INFORMATION CONTACT

Bill Beall Co., Inc.

2921 S. National Ave., Springfield, MO 65804

(417) 887-5535 email: beall@billbeall.com

## Kansas Station

3037 S. Kansas Expressway, Springfield, MO



FOR ADDITIONAL INFORMATION CONTACT

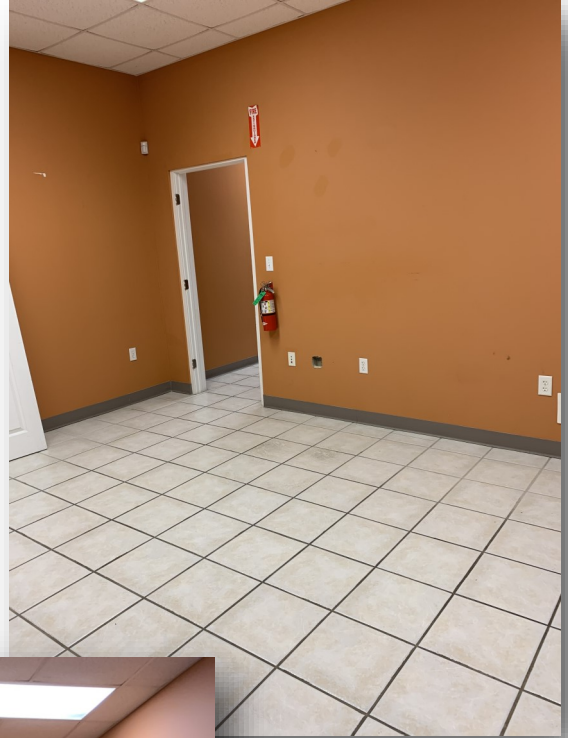
Bill Beall Co., Inc.

2921 S. National Ave., Springfield, MO 65804



## Kansas Station

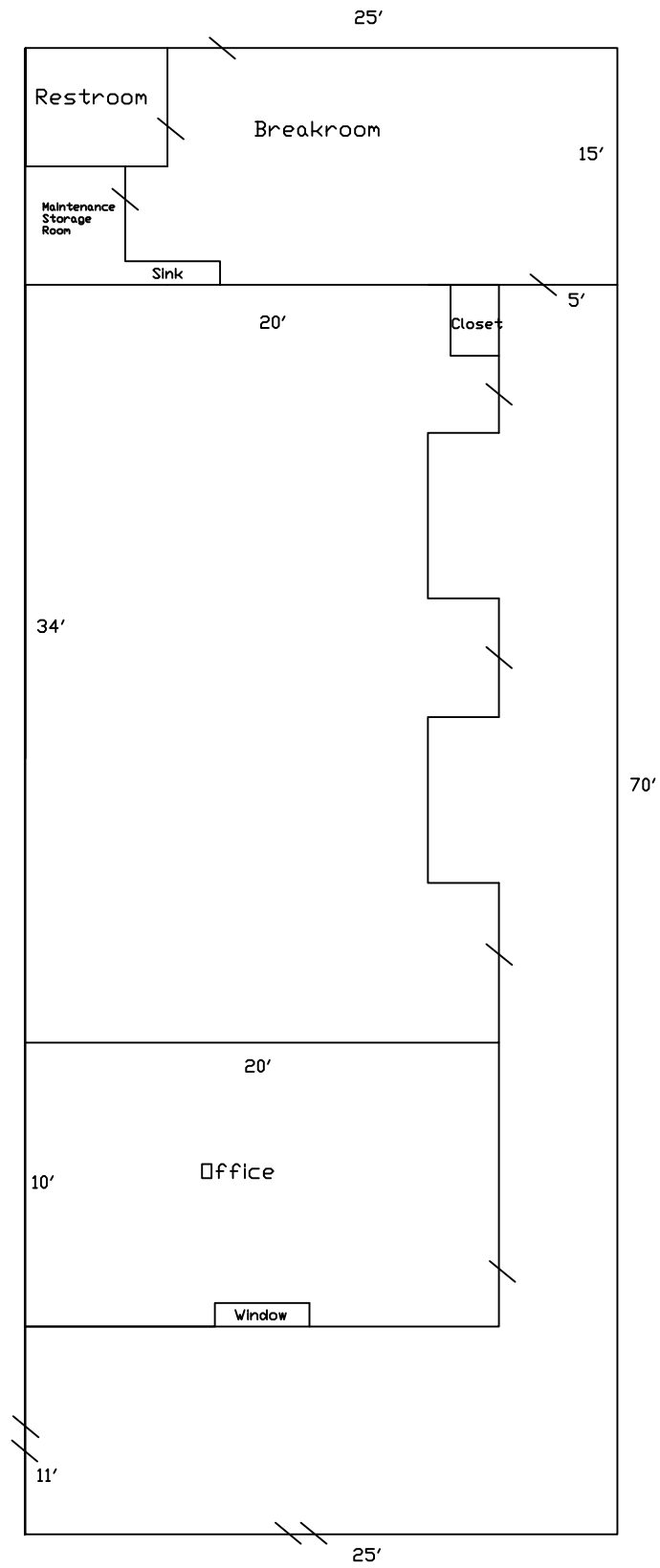
3037 S. Kansas Expressway, Springfield, MO



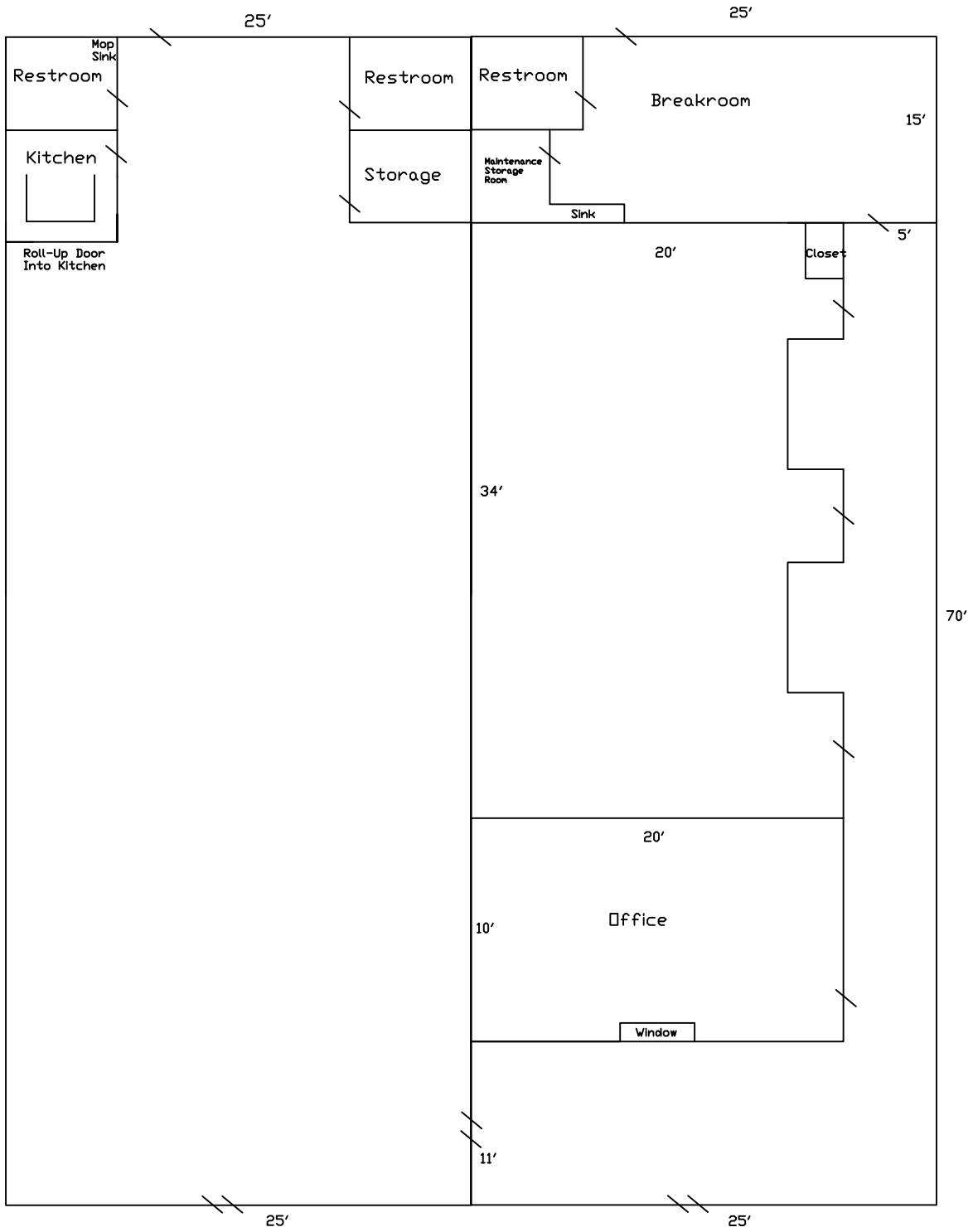
FOR ADDITIONAL INFORMATION CONTACT

Bill Beall Co., Inc.

2921 S. National Ave., Springfield, MO 65804



3037 S. Kansas Expressway



3039 S. Kansas Expressway

3037 S. Kansas Expressway

**Kansas Station**

3037 S. Kansas Expressway, Springfield, MO



FOR ADDITIONAL INFORMATION CONTACT

Bill Beall Co., Inc.

2921 S. National Ave., Springfield, MO 65804

## Kansas Station

3037 S. Kansas Expressway, Springfield, MO



### Traffic Counts:

Kansas Expressway N. of Battlefield = 36,770

Kansas Expressway S. of Battlefield = 31,039

Battlefield E. of Kansas Expressway = 27,941

Battlefield W. of Kansas Expressway = 27,466

FOR ADDITIONAL INFORMATION CONTACT

Bill Beall Co., Inc.

2921 S. National Ave., Springfield, MO 65804

(417) 887-5535 email: beall@billbeall.com





# Business Summary

3009 S Kansas Expy, Springfield, Missouri, 65807  
Rings: 1, 3, 5 mile radii

Prepared by Esri  
Latitude: 37.15954  
Longitude: -93.31817

## Data for all businesses in area

|   | 1 mile |         | 3 miles |         | 5 miles |         |
|---|--------|---------|---------|---------|---------|---------|
|   | Number | Percent | Number  | Percent | Number  | Percent |
| Total Businesses:   | 450    |         | 3,924   |         | 8,415   |         |
| Total Employees:  | 5,563  |         | 79,679  |         | 161,525 |         |
| Total Residential Population:                             | 9,317  |         | 77,645  |         | 172,343 |         |
| Employee/Residential Population Ratio (per 100 Residents) | 60     |         | 103     |         | 94      |         |
| by SIC Codes  | Number | Percent | Number  | Percent | Number  | Percent |
| Agriculture & Mining                                      | 8      | 1.8%    | 52      | 0.9%    | 310     | 0.4%    |
| Construction  | 30     | 6.7%    | 208     | 3.7%    | 1,254   | 1.6%    |
| Manufacturing   | 16     | 3.6%    | 271     | 4.9%    | 1,631   | 2.0%    |
| Transportation  | 7      | 1.6%    | 72      | 1.3%    | 907     | 1.1%    |
| Communication   | 2      | 0.4%    | 14      | 0.3%    | 1,166   | 1.5%    |
| Utility   | 2      | 0.4%    | 264     | 4.7%    | 521     | 0.7%    |
| Wholesale Trade   | 34     | 7.6%    | 768     | 13.8%   | 1,863   | 2.3%    |
| Retail Trade Summary                                      | 83     | 18.4%   | 1,336   | 24.0%   | 17,484  | 21.9%   |
| Home Improvement  | 4      | 0.9%    | 30      | 0.5%    | 478     | 0.6%    |
| General Merchandise Stores                                | 2      | 0.4%    | 272     | 4.9%    | 2,251   | 2.8%    |
| Food Stores   | 10     | 2.2%    | 240     | 4.3%    | 1,435   | 1.8%    |
| Auto Dealers, Gas Stations, Auto Aftermarket              | 11     | 2.4%    | 70      | 1.3%    | 1,736   | 2.2%    |
| Apparel & Accessory Stores                                | 4      | 0.9%    | 13      | 0.2%    | 967     | 1.2%    |
| Furniture & Home Furnishings                              | 8      | 1.8%    | 63      | 1.1%    | 425     | 0.5%    |
| Eating & Drinking Places                                  | 17     | 3.8%    | 334     | 6.0%    | 5,494   | 6.9%    |
| Miscellaneous Retail                                      | 28     | 6.2%    | 314     | 5.6%    | 4,699   | 5.9%    |
| Finance, Insurance, Real Estate Summary                   | 53     | 11.8%   | 399     | 7.2%    | 4,409   | 5.5%    |
| Banks, Savings & Lending Institutions                     | 11     | 2.4%    | 159     | 2.9%    | 1,261   | 1.6%    |
| Securities Brokers  | 8      | 1.8%    | 24      | 0.4%    | 315     | 0.4%    |
| Insurance Carriers & Agents                               | 9      | 2.0%    | 40      | 0.7%    | 813     | 1.0%    |
| Real Estate, Holding, Other Investment Offices            | 25     | 5.6%    | 176     | 3.2%    | 2,020   | 2.5%    |
| Services Summary  | 189    | 42.0%   | 2,007   | 36.1%   | 48,722  | 61.1%   |
| Hotels & Lodging  | 1      | 0.2%    | 7       | 0.1%    | 14      | 0.4%    |
| Automotive Services                                       | 11     | 2.4%    | 51      | 0.9%    | 73      | 1.9%    |
| Motion Pictures & Amusements                              | 15     | 3.3%    | 79      | 1.4%    | 101     | 2.6%    |
| Health Services   | 26     | 5.8%    | 684     | 12.3%   | 3,789   | 9.6%    |
| Legal Services  | 7      | 1.6%    | 25      | 0.4%    | 408     | 0.5%    |
| Education Institutions & Libraries                        | 3      | 0.7%    | 99      | 1.8%    | 1,949   | 2.4%    |
| Other Services  | 126    | 28.0%   | 1,062   | 19.1%   | 7,508   | 9.4%    |
| Government  | 4      | 0.9%    | 167     | 3.0%    | 1,315   | 1.7%    |
| Unclassified Establishments                               | 22     | 4.9%    | 6       | 0.1%    | 187     | 4.8%    |
| Totals  | 450    | 100.0%  | 5,563   | 100.0%  | 79,679  | 100.0%  |

Source: Copyright 2020 Infogroup, Inc. All rights reserved. Esri Total Residential Population forecasts for 2020.  
Date Note: Data on the Business Summary report is calculated using Esri's Data allocation method which uses census block groups to allocate business summary data to custom areas.





# Business Summary

3009 S Kansas Expy, Springfield, Missouri, 65807  
Rings: 1, 3, 5 mile radii

Prepared by Esri  
Latitude: 37.15954  
Longitude: -93.31817

| by NAICS Codes  | Businesses |         | Employees |         | Businesses |         | Employees |         | Businesses |         | Employees |         |
|---|------------|---------|-----------|---------|------------|---------|-----------|---------|------------|---------|-----------|---------|
|   | Number     | Percent | Number    | Percent | Number     | Percent | Number    | Percent | Number     | Percent | Number    | Percent |
| Agriculture, Forestry, Fishing & Hunting                  | 2          | 0.4%    | 2         | 0.0%    | 12         | 0.3%    | 29        | 0.0%    | 21         | 0.2%    | 53        | 0.0%    |
| Mining  | 0          | 0.0%    | 0         | 0.0%    | 2          | 0.1%    | 6         | 0.0%    | 4          | 0.0%    | 26        | 0.0%    |
| Utilities   | 2          | 0.4%    | 264       | 4.7%    | 2          | 0.1%    | 340       | 0.4%    | 6          | 0.1%    | 449       | 0.3%    |
| Construction  | 33         | 7.3%    | 214       | 3.8%    | 211        | 5.4%    | 1,369     | 1.7%    | 493        | 5.9%    | 3,864     | 2.4%    |
| Manufacturing   | 20         | 4.4%    | 336       | 6.0%    | 70         | 1.8%    | 1,777     | 2.2%    | 227        | 2.7%    | 6,463     | 4.0%    |
| Wholesale Trade   | 33         | 7.3%    | 763       | 13.7%   | 102        | 2.6%    | 1,835     | 2.3%    | 255        | 3.0%    | 4,751     | 2.9%    |
| Retail Trade  | 58         | 12.9%   | 964       | 17.3%   | 629        | 16.0%   | 11,747    | 14.7%   | 1,245      | 14.8%   | 17,858    | 11.1%   |
| Motor Vehicle & Parts Dealers                             | 5          | 1.1%    | 46        | 0.8%    | 64         | 1.6%    | 1,651     | 2.1%    | 156        | 1.9%    | 3,217     | 2.0%    |
| Furniture & Home Furnishings Stores                       | 4          | 0.9%    | 30        | 0.5%    | 29         | 0.7%    | 262       | 0.3%    | 68         | 0.8%    | 540       | 0.3%    |
| Electronics & Appliance Stores                            | 3          | 0.7%    | 19        | 0.3%    | 20         | 0.5%    | 131       | 0.2%    | 44         | 0.5%    | 364       | 0.2%    |
| Bldg Material & Garden Equipment & Supplies Dealers       | 4          | 0.9%    | 30        | 0.5%    | 27         | 0.7%    | 460       | 0.6%    | 70         | 0.8%    | 1,073     | 0.7%    |
| Food & Beverage Stores                                    | 5          | 1.1%    | 223       | 4.0%    | 58         | 1.5%    | 1,147     | 1.4%    | 122        | 1.4%    | 1,924     | 1.2%    |
| Health & Personal Care Stores                             | 8          | 1.8%    | 148       | 2.7%    | 80         | 2.0%    | 1,145     | 1.4%    | 120        | 1.4%    | 1,526     | 0.9%    |
| Gasoline Stations   | 5          | 1.1%    | 24        | 0.4%    | 18         | 0.5%    | 84        | 0.1%    | 35         | 0.4%    | 185       | 0.1%    |
| Clothing & Clothing Accessories Stores                    | 4          | 0.9%    | 14        | 0.3%    | 106        | 2.7%    | 1,045     | 1.3%    | 175        | 2.1%    | 1,442     | 0.9%    |
| Sport Goods, Hobby, Book, & Music Stores                  | 4          | 0.9%    | 19        | 0.3%    | 51         | 1.3%    | 2,792     | 3.5%    | 93         | 1.1%    | 3,250     | 2.0%    |
| General Merchandise Stores                                | 2          | 0.4%    | 272       | 4.9%    | 53         | 1.4%    | 2,251     | 2.8%    | 104        | 1.2%    | 2,997     | 1.9%    |
| Miscellaneous Store Retailers                             | 11         | 2.4%    | 117       | 2.1%    | 102        | 2.6%    | 748       | 0.9%    | 208        | 2.5%    | 1,170     | 0.7%    |
| Nonstore Retailers  | 2          | 0.4%    | 22        | 0.4%    | 22         | 0.6%    | 30        | 0.0%    | 50         | 0.6%    | 170       | 0.1%    |
| Transportation & Warehousing                              | 5          | 1.1%    | 67        | 1.2%    | 47         | 1.2%    | 568       | 0.7%    | 101        | 1.2%    | 1,249     | 0.8%    |
| Information   | 9          | 2.0%    | 108       | 1.9%    | 90         | 2.3%    | 1,672     | 2.1%    | 196        | 2.3%    | 4,316     | 2.7%    |
| Finance & Insurance                                       | 30         | 6.7%    | 230       | 4.1%    | 312        | 8.0%    | 2,415     | 3.0%    | 622        | 7.4%    | 4,888     | 3.0%    |
| Central Bank/Credit Intermediation & Related Activities   | 13         | 2.9%    | 167       | 3.0%    | 103        | 2.6%    | 1,238     | 1.6%    | 191        | 2.3%    | 2,190     | 1.4%    |
| Securities, Commodity Contracts & Other Financial         | 8          | 1.8%    | 24        | 0.4%    | 69         | 1.8%    | 365       | 0.5%    | 154        | 1.8%    | 1,039     | 0.6%    |
| Insurance Carriers & Related Activities; Funds, Trusts &  | 9          | 2.0%    | 40        | 0.7%    | 139        | 3.5%    | 813       | 1.0%    | 276        | 3.3%    | 1,659     | 1.0%    |
| Real Estate, Rental & Leasing                             | 28         | 6.2%    | 146       | 2.6%    | 245        | 6.2%    | 1,619     | 2.0%    | 511        | 6.1%    | 3,398     | 2.1%    |
| Professional, Scientific & Tech Services                  | 51         | 11.3%   | 397       | 7.1%    | 379        | 9.7%    | 2,643     | 3.3%    | 900        | 10.7%   | 7,131     | 4.4%    |
| Legal Services  | 9          | 2.0%    | 58        | 1.0%    | 79         | 2.0%    | 524       | 0.7%    | 214        | 2.5%    | 1,600     | 1.0%    |
| Management of Companies & Enterprises                     | 0          | 0.0%    | 0         | 0.0%    | 9          | 0.2%    | 425       | 0.5%    | 17         | 0.2%    | 541       | 0.3%    |
| Administrative & Support & Waste Management & Remediation | 17         | 3.8%    | 121       | 2.2%    | 154        | 3.9%    | 1,179     | 1.5%    | 337        | 4.0%    | 3,266     | 2.0%    |
| Educational Services                                      | 9          | 2.0%    | 123       | 2.2%    | 78         | 2.0%    | 1,838     | 2.3%    | 210        | 2.5%    | 9,599     | 5.9%    |
| Health Care & Social Assistance                           | 37         | 8.2%    | 936       | 16.8%   | 474        | 12.1%   | 39,017    | 49.0%   | 759        | 9.0%    | 60,408    | 37.4%   |
| Arts, Entertainment & Recreation                          | 7          | 1.6%    | 43        | 0.8%    | 69         | 1.8%    | 937       | 1.2%    | 156        | 1.9%    | 3,357     | 2.1%    |
| Accommodation & Food Services                             | 18         | 4.0%    | 344       | 6.2%    | 316        | 8.1%    | 5,842     | 7.3%    | 665        | 7.9%    | 11,902    | 7.4%    |
| Accommodation   | 1          | 0.2%    | 7         | 0.1%    | 14         | 0.4%    | 210       | 0.3%    | 50         | 0.6%    | 680       | 0.4%    |
| Food Services & Drinking Places                           | 18         | 4.0%    | 337       | 6.1%    | 302        | 7.7%    | 5,632     | 7.1%    | 615        | 7.3%    | 11,222    | 6.9%    |
| Other Services (except Public Administration)             | 64         | 14.2%   | 332       | 6.0%    | 504        | 12.8%   | 3,004     | 3.8%    | 1,096      | 13.0%   | 11,091    | 6.9%    |
| Automotive Repair & Maintenance                           | 11         | 2.4%    | 51        | 0.9%    | 58         | 1.5%    | 416       | 0.5%    | 156        | 1.9%    | 1,017     | 0.6%    |
| Public Administration                                     | 4          | 0.9%    | 167       | 3.0%    | 32         | 0.8%    | 1,320     | 1.7%    | 148        | 1.8%    | 6,470     | 4.0%    |
| Unclassified Establishments                               | 22         | 4.9%    | 6         | 0.1%    | 187        | 4.8%    | 96        | 0.1%    | 444        | 5.3%    | 447       | 0.3%    |
| Total   | 450        | 100.0%  | 5,563     | 100.0%  | 3,924      | 100.0%  | 79,679    | 100.0%  | 8,415      | 100.0%  | 161,525   | 100.0%  |

Source: Copyright 2020 Infogroup, Inc. All rights reserved. Esri Total Residential Population forecasts for 2020.

Date Note: Data on the Business Summary report is calculated using Esri's Data allocation method which uses census block groups to allocate business summary data to custom areas.